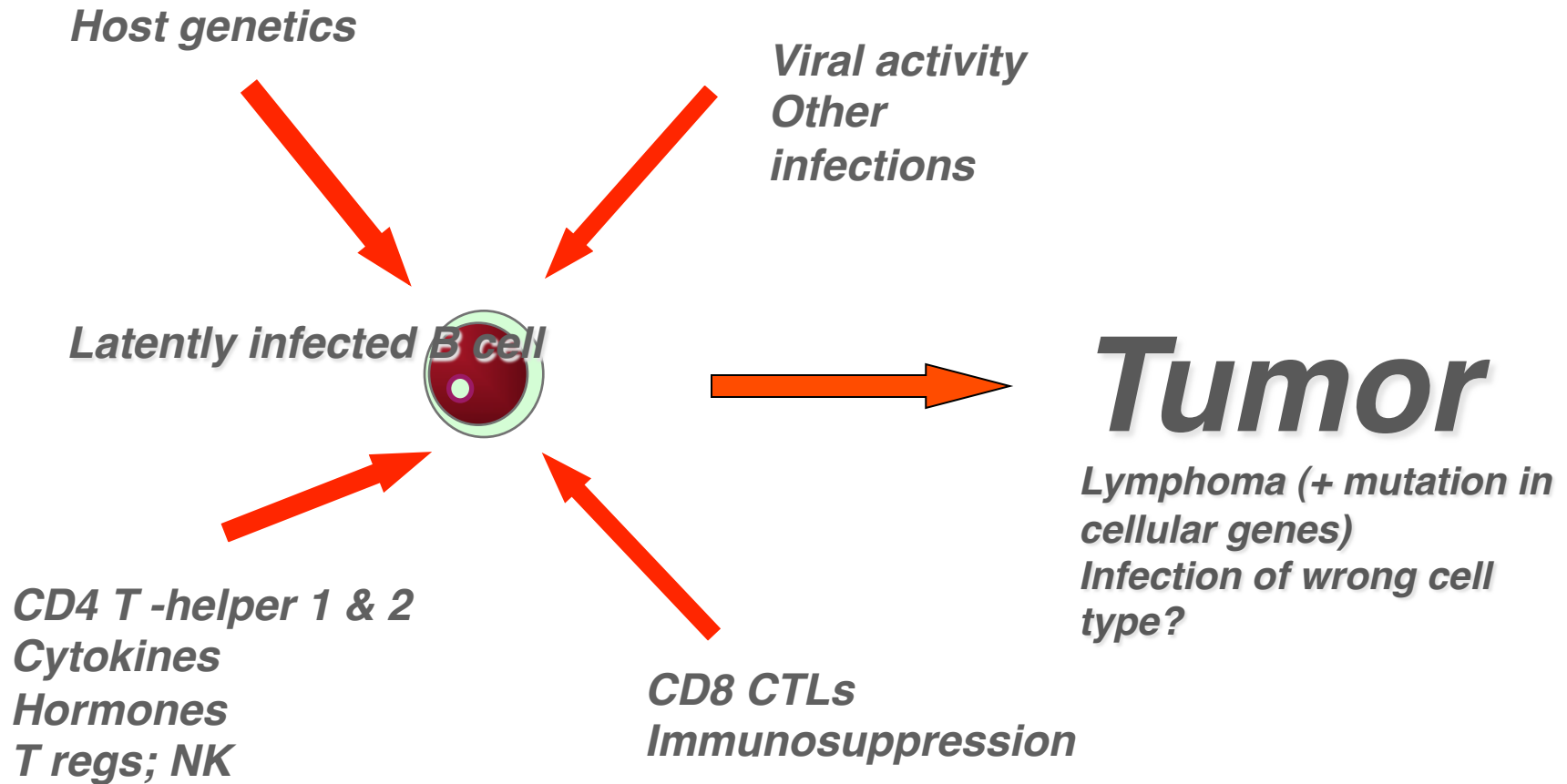


# What is the most efficient immunotherapy to Epstein-Barr virus infection?

Ingemar Ernberg  
Riga  
May 2016

Dept of Microbiology, Tumor and  
Cell Biology (MTC)

# *Control and disruption of EBV latent infection*



# *Prevention/vaccination or Immunotherapy*

Why? Who? When? How?

---

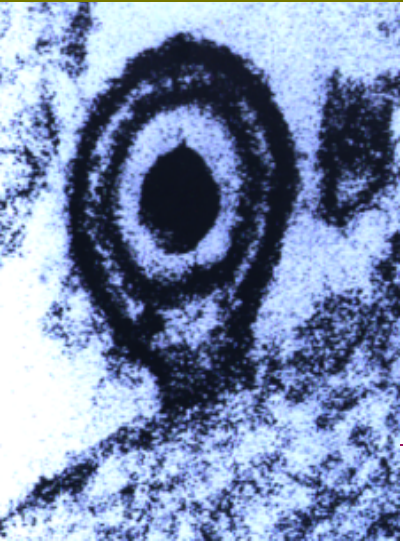
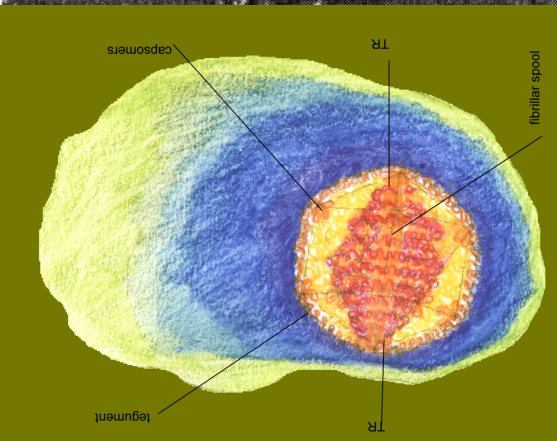
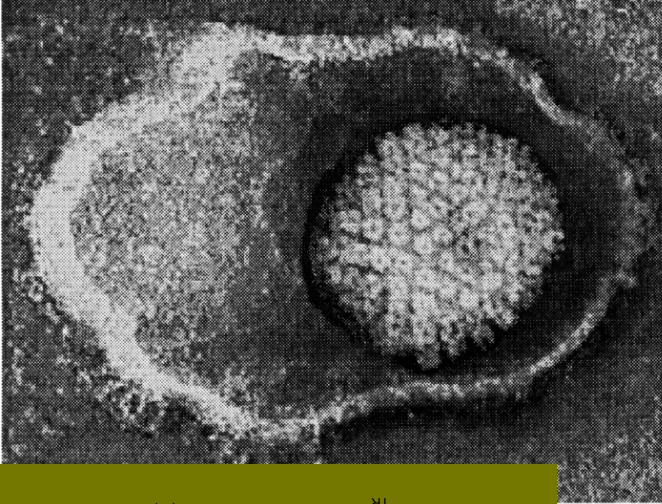
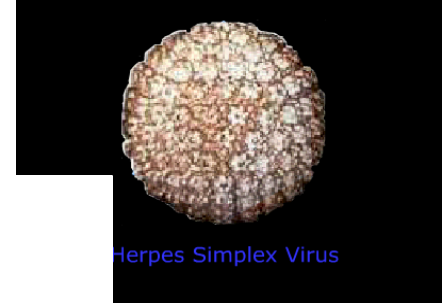
# *My points*

- ◆ EBV & infection in vivo
  - ◆ Vaccine?
  - ◆ Tumors
  - ◆ High risk: transplant pat:s (& HIV-carriers)
  - ◆ T-cell therapy
-

# Epstein-Barr virus

## *The paradoxes*

## *EveryBodies Virus*

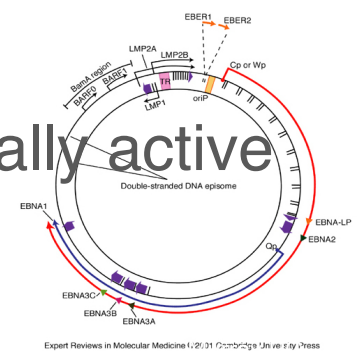


- Most common virus in the human population (>90% of all adults, life long persistence)

- Tumor-associated virus

- 80% of carriers secrete biologically active virus (saliva)

- Very efficient in immortalizing B-cells (2001)



Expert Reviews in Molecular Medicine 1:20:31 Cambridge University Press

# ***Stability***

## ***A suitable vaccine target***

- ◆ 50+ complete DNA-sequences
  - ◆ Two major types: type I=type A and type II=type B (98 % homology)
  - ◆ Subtypes ill-defined: a chinese?, deletions in critical genes (LMP 1)
  - ◆ Variants: appr = familiar isolates (recombination between large repeats in latency genes)
-

EBV(s) has(ve) adapted over millions of years to a very successful life within the immune system.

The viral strategy for survival, latency and spread in the population has evolved numerous mechanisms to master this challenging situation.

EBV-associated tumors are a rare trade off of this normally balanced virus-host interaction

---

# EBV life cycle in vivo

Virus replication in  
oropharyngeal epithelium

IgA?  
Corresponds  
To neuronal  
Axon of neurotropic  
Herpesvirus

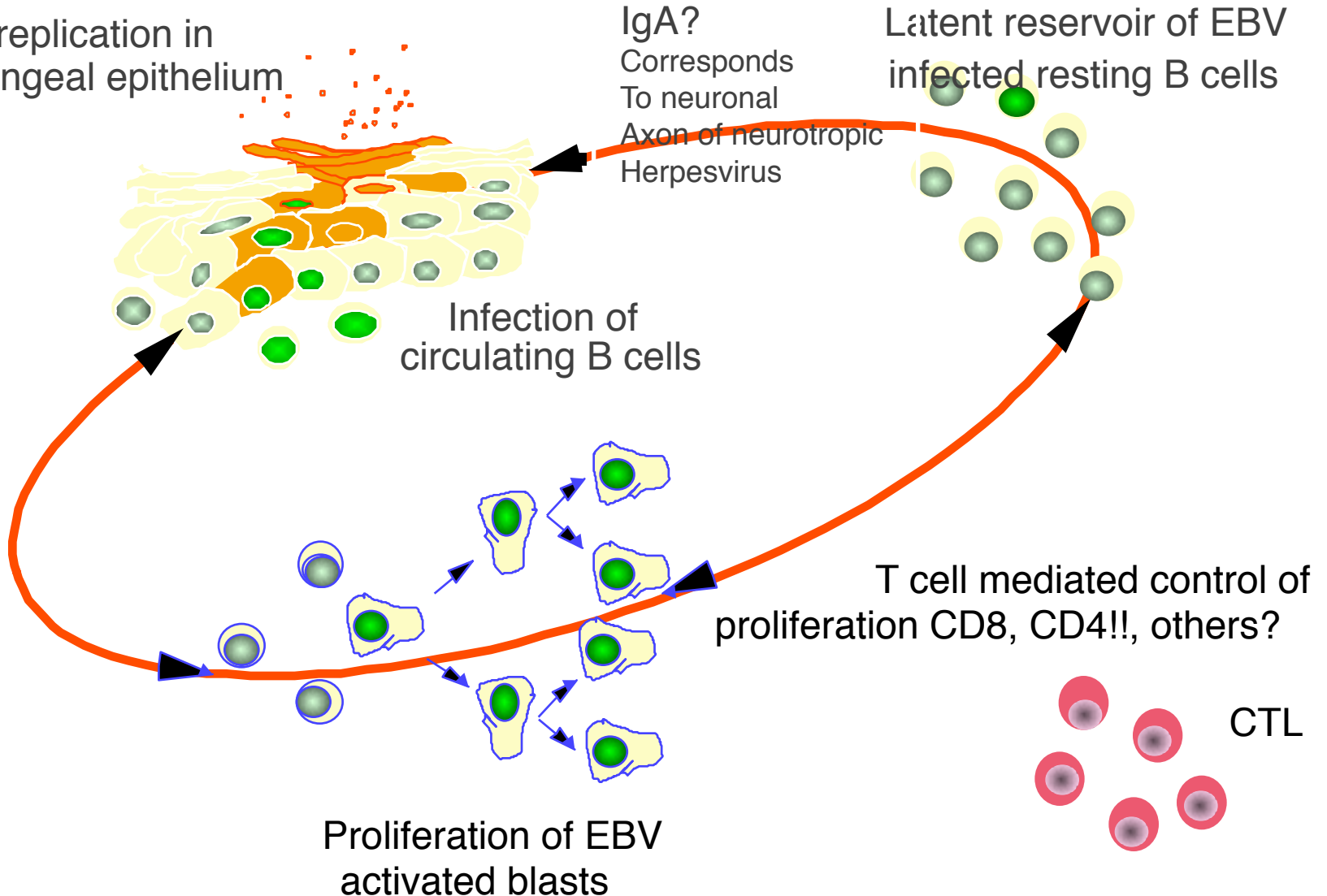
Latent reservoir of EBV  
infected resting B cells

Infection of  
circulating B cells

T cell mediated control of  
proliferation CD8, CD4!!, others?

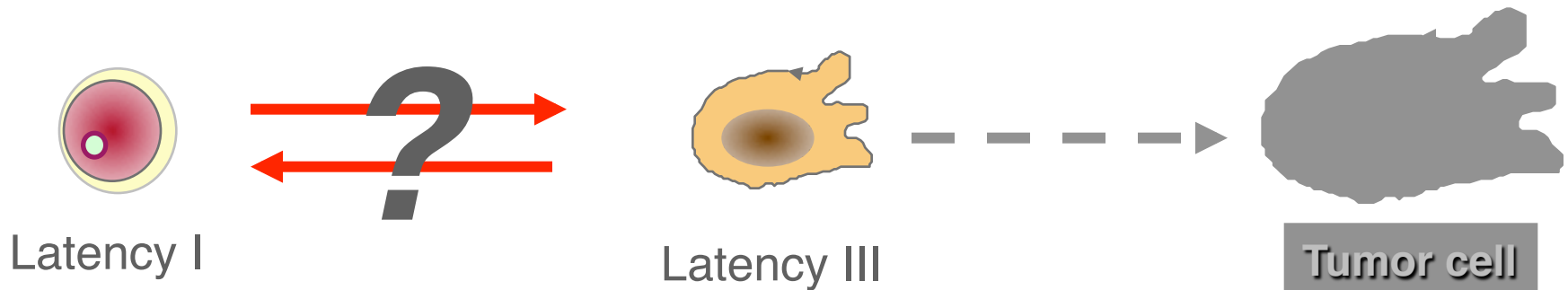
Proliferation of EBV  
activated blasts

CTL





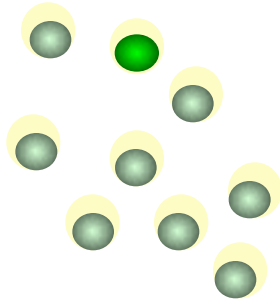
# *Control of the latency-switch, latency I to III and reverse*



# Model system for transformation in vitro

- HBV/HCV -
- HPV (+)
- EBV ++
- HHV 8/KSHV -
- HTLV +
  
- *H. Pylori* -
- Parasites (liver fluke,  
*Shistsomiasis*) -

## *Latency in vivo*



One infected B-lymphocyte/  
100ul-10 ml of blood  
(0,1-10/100.000 B-cells)

5000 infected cells in blood in a  
healthy carrier (+ X in lymphoid  
system)

Increases 100-10.000-fold in high  
risk groups

# *Host-virus interaction & diseases*

- ◆ Childhood infection *subclinical*
  - ◆ Primary infection > 5 yrs 35% risk of *infectious mononucleosis* (“an acute autoimmune syndrome”)
  - ◆ In immunosuppressed: (Fatal/Chronic) *lymphoproliferative syndrome*
  - ◆ *Lymphomas, epithelial cancers* as a result of accidents of the host-virus interaction
-

## *To think about*

Most biologically active EBV on earth is  
swallowed with the saliva.

300-500 ml/day, appr 500 infectious  
units entering the GI every day in  
80% of humans.

“Part of the normal flora”

Role in infection, immune boosting,  
and pathogenesis?

# Infectious agents

## Number of new tumors annually & globally

▪ HBV/HCV	500,000
▪ HPV	450.000
▪ EBV	200.000
▪ HHV 8/KSHV	45.000
▪ HIV	10.000
▪ HTLV	2.200
▪ <i>H.Pylori</i>	460,000
▪ <i>Cl.psitacci, Borrelia burgdorfei,</i>	
<i>Campylobacter jejenum</i>	500?
▪ Parasites (liver fluke, <i>Shistsomiasis</i> )	11,000

# EBV-associated tumors in man

## *Lymphoid tissues*

Burkitt's lymphoma, endemic	98%
Burkitt's lymphoma, sporadic	30%
AIDS-immunoblastic lymphoma	30%
-in CNS	100%
Post-transplant lymphoma	100%
Hodgkin's lymphoma	50%
T-cell lymphomas	10-30%
--lethal midline granuloma	>90%
Primary effusion lymphomas	>90%

## *Epithelial tissues*

Oral hairy leukoplakia	100%
Gastric adenocarcinoma	5-10%
Nasopharyngeal carcinoma, undifferentiated	100%
Salivary gland carcinomas	<100%

## *Smooth muscle tissue*

Leiomyosarcoma in immunosuppressed	100%
---------------------------------------	------

# EBV-associated tumors in man

## *Lymphoid tissues*

Burkitt's lymphoma, endemic	98%
Burkitt's lymphoma, sporadic	30%
AIDS-immunoblastic lymphoma	30%
-in CNS	100%
Post-transplant lymphoma	100%
Hodgkin's lymphoma	50%
T-cell lymphomas	10-30%
--lethal midline granuloma	>90%
Primary effusion lymphomas	>90%

## *Epithelial tissues*

Oral hairy leukoplakia	100%
Gastric adenocarcinoma	5-10%
Nasopharyngeal carcinoma, undifferentiated	100%
Salivary gland carcinomas	<100%

## *Smooth muscle tissue*

Leiomyosarcoma in immunosuppressed	100%
---------------------------------------	------



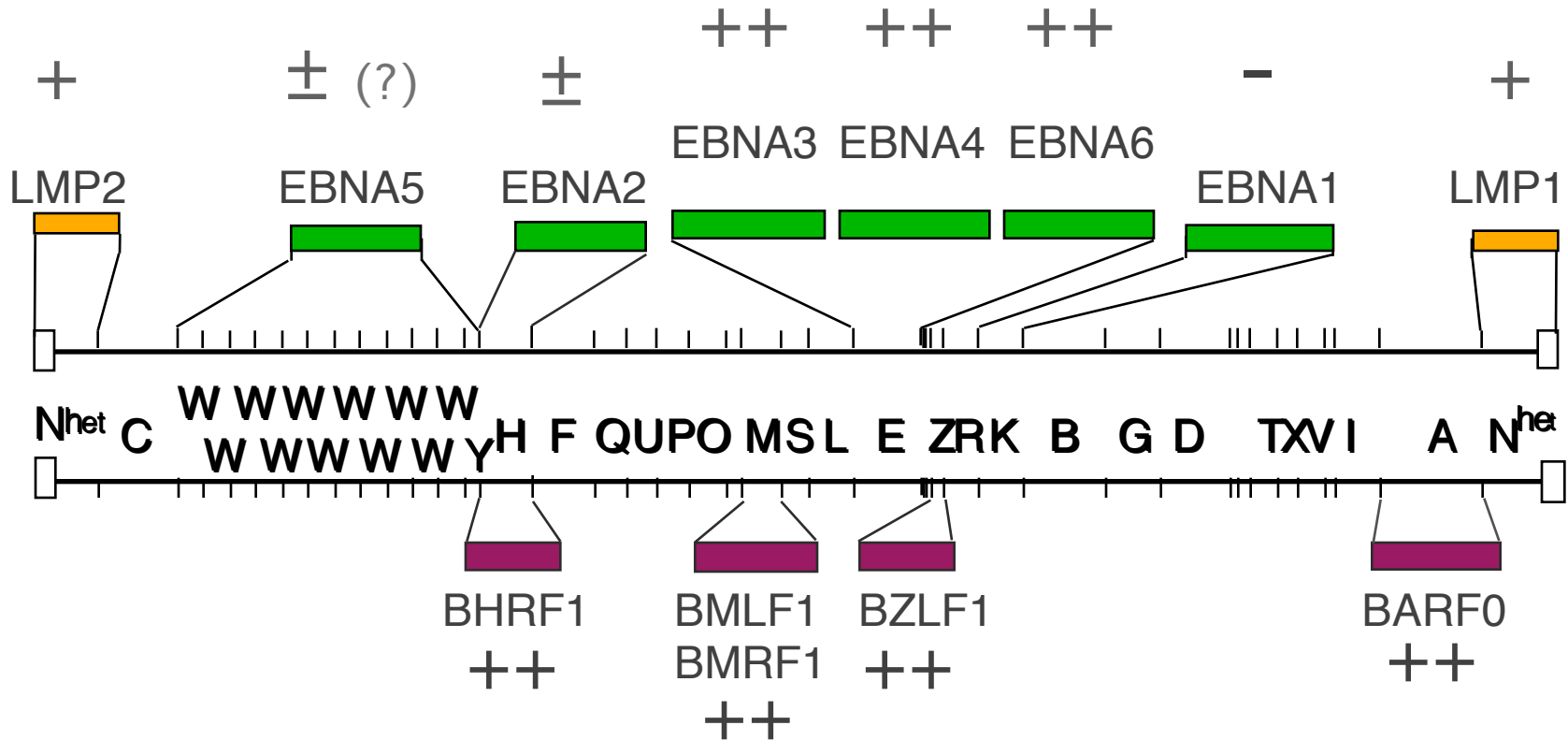
# Geographic distribution of EB virus-associated tumors



# EBV - therapeutic strategies

- ◆ Conventional cancertherapy
  - ◆ Anti-viral drugs: spec DNA-polymerase inhibitors (acyclovir etc.) clears replication but not latent infection. Effect on lymphoproliferative syndrome
  - ◆ Bone marrow transplantation can clear out the whole EBV-infection including latency
  - ◆ Therapeutic vaccines
  - ◆ Adoptive transfer of EBV-specific cytotoxic T-lymphocytes (CTL) reeducated in vitro
- 
- (Check point-blockers PD1/CTLA4)

# EBV specific cytotoxic T-cell (CTL) responses



- polyclonal responses preferentially directed against EBNA3,4,6 and antigens of the lytic cycle
- strongly focused on certain MHC:peptide combinations
- endogenously expressed EBNA1 is not recognised

# Components of immunity to EBV

- ◆ Antibodies are efficiently neutralizing infection (anti-gp 350; anti-MA)
- ◆ Antibodies + complement/LAK-cells eliminate virus replicating cells
- ◆ Earlier dogma: Cytotoxic T-lymphocytes are instrumental in controlling the life-long latency (Masucci, Rickinson, Moss)
- ◆ Recent discovery: CD4 cells producing specific cytokines (IL21) control the latent infection (Nagy, Kis, Klein; KI)

# *Receptors*

B-cells: C3d (CR2)-receptor, CD 21  
MHC Class II (co-receptor)

Epithelial cells: MHC Class II  
Unorthodox mechanisms

Virus envelope receptor: gp 350/220

---

# EBV vaccine

## Primary preventive

- ◆ Recombinant gp350, major envelope glycoprotein, receptor binding, neutralizing epitope (prevents lymphomas in monkey models)
  - ◆ To be used when, where and how? Risk groups for NPC, EBV-negative adolescents (IM)
-

# EBV vaccines...



Karolinska  
Institutet

## Therapeutic

- ◆ “Polytope”, several MHC Class I epitopes combined in a vaccinia-vector based vaccine (D.Moss et al)
  - ◆ Peptide-loaded dendritic cells (NPC; A.Rickinson et al)
  - ◆ Adoptive cytotoxic T-cell transfer (C.Rooney; M.Masucci et al)
  - ◆ Recombinant gp350, major envelope glycoprotein, receptor binding, neutralizing epitope (therapeutic in post-transplants?; A.Morgan et al +CRC, UK)
  - ◆ CTL modulation combined with demethylation (Rich Ambinder et al.)?
-

# Groups with high risk for EBV positive lymphomas

- Bone-marrow/HSC transplanted pat:s (with minor mismatch)
- HIV-carriers (before HAART; 15-20 % CNS lymphomas)
- Children with chronic malaria
- Immunodisregulation+Chronic antigen stimulation



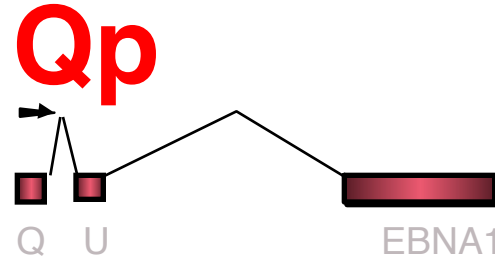
# Proliferation-rest is regulated by viral expression programs in latency



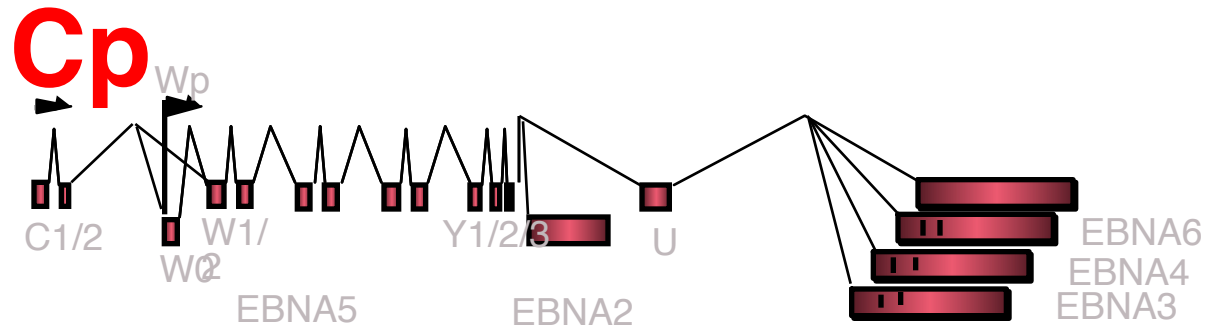
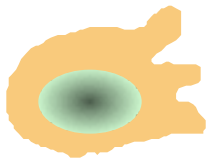
Latency I  
0-4 genes  
Resting



EBER 1&2



Latency III  
12 genes  
Proliferation



Cell proliferation

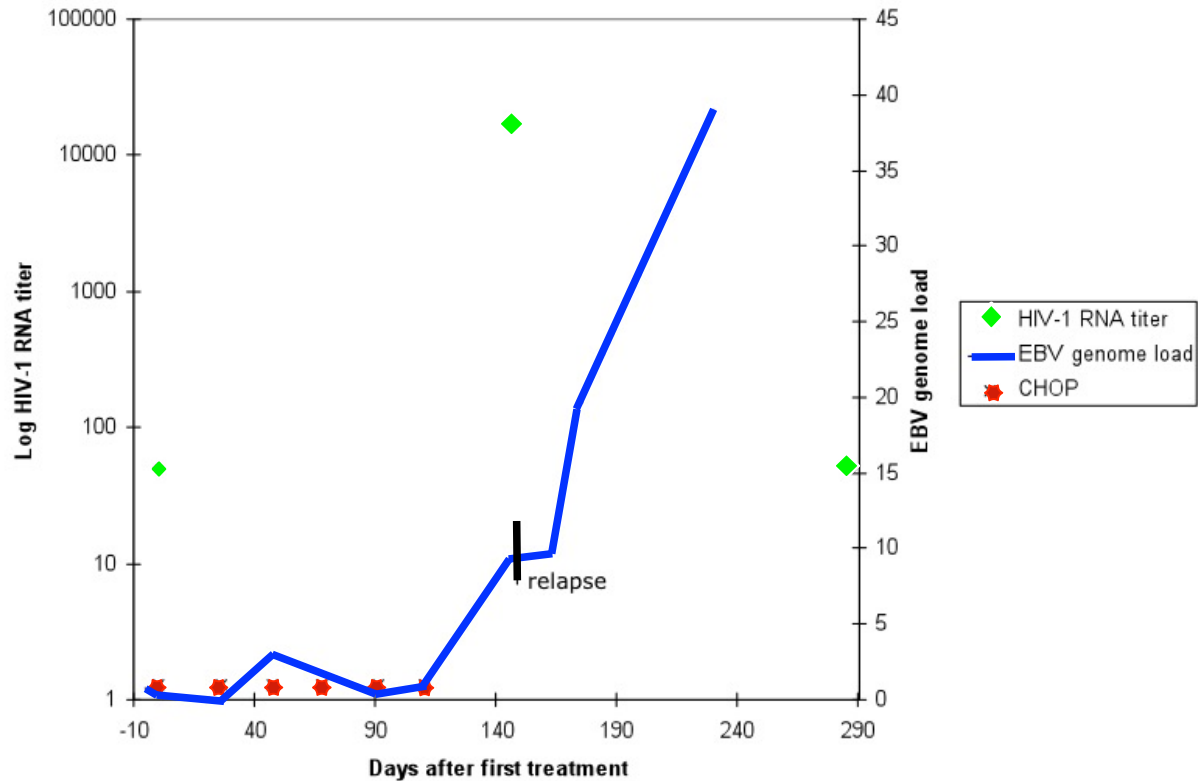
# Incidence of post-transplant lymphoproliferative disease (PTLD) depending on type of transplant

- Kidney 1 %
- Liver 2 %
- Heart 3 %
- Lung 1 – 8 %
- Heart and lung 9 %
- Intestine 7 – 11 %
- Multivisceral 13 – 33 %
- BMT 1 % (up to 30 %)

## Risk factors for post-transplant lymphoproliferative disease (PTLD)

- Mismatched, unrelated stem cell grafts
- Primary immune deficiency
- T-cell depletion techniques which do not concomitantly reduce the B-cell content
- Use of anti-T-cell antibodies ( ATG, OKT-3 )
- Heavy immune suppression
- High levels of circulating EBV-infected cells \*
- EBV-seronegative recipient
- CMV infection / Young age ?/ GVHD treatment

# EBV-DNA load and relapse in EBV-associated lymphoma (HIV-infected patient)

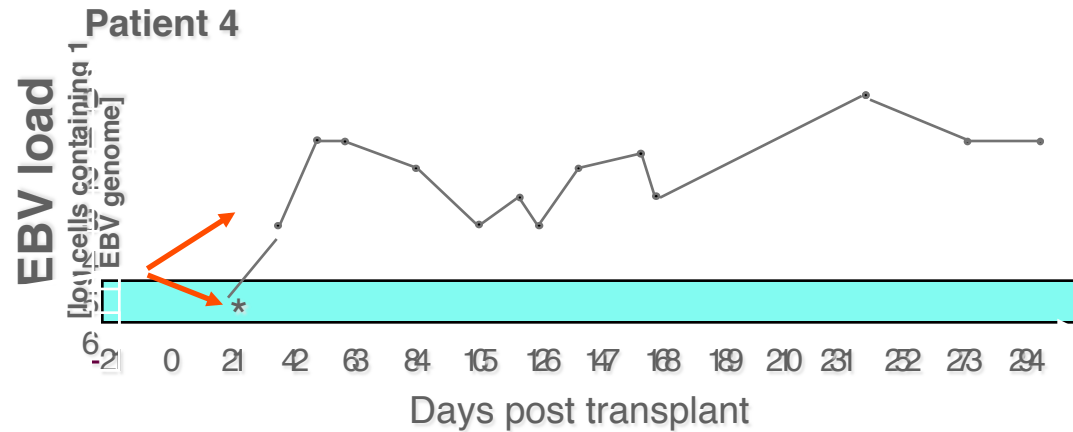


# Increased EBV load in patients receiving T-cell depleted BMT

Several log-fold increase of EBV-load post-BMT...

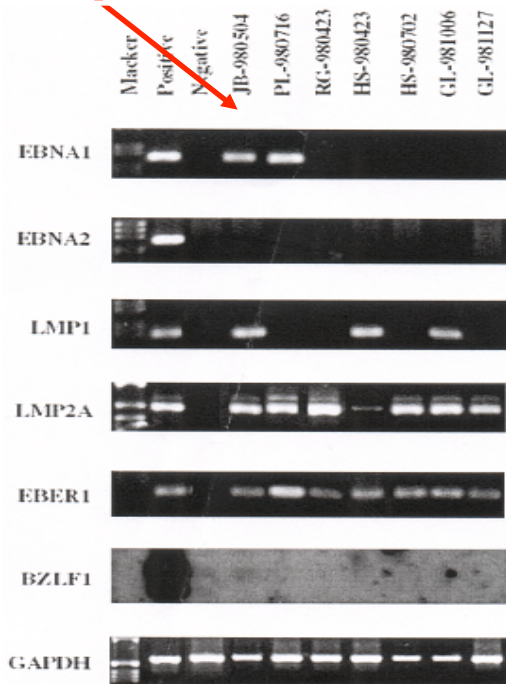
.... related to T-cell depletion of graft

....only latency 1 & 2 (restricted, non-proliferating in blood)

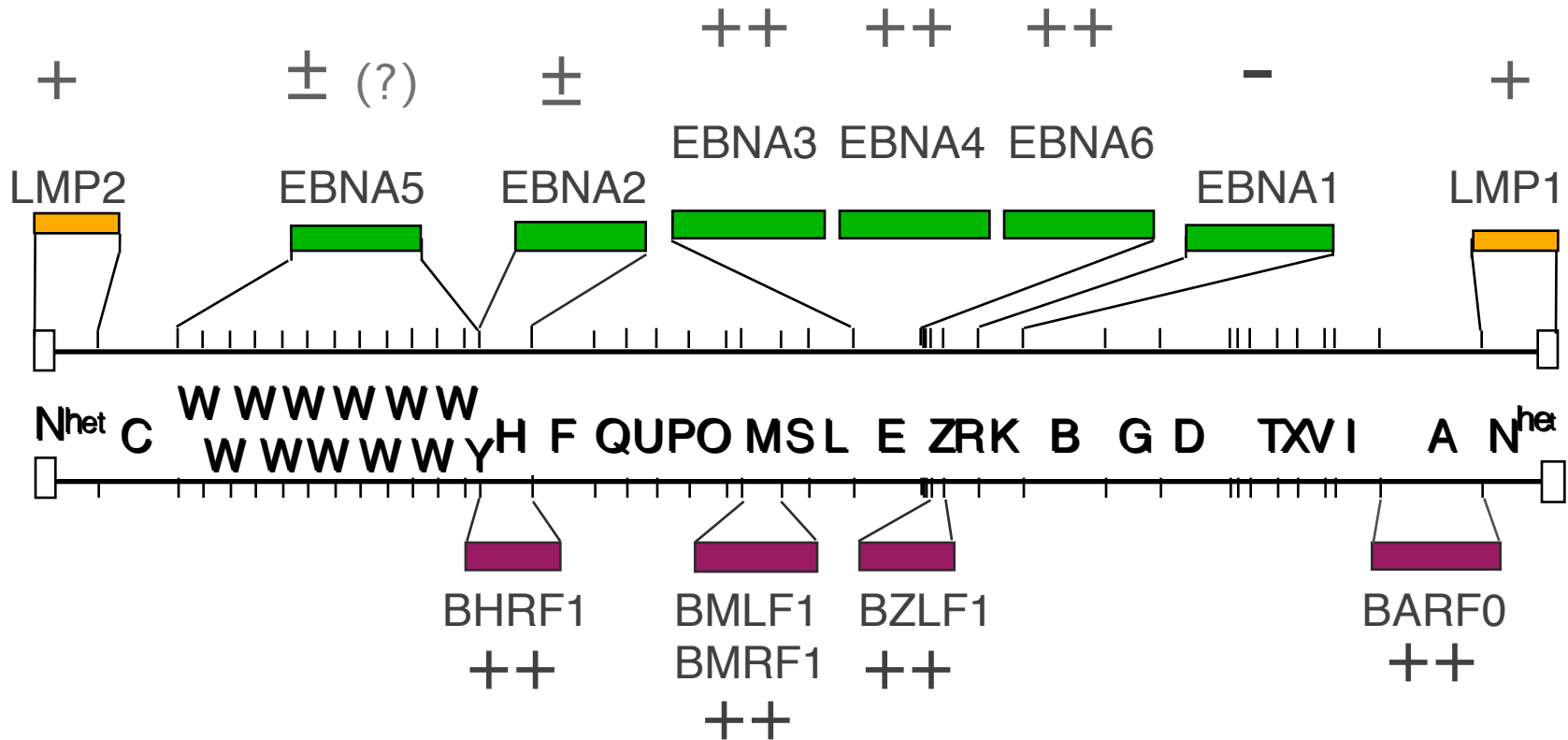


Maximal EBV load recorded in BMT recipients with high or low risk of PTLD

Donor	Type of BM graft	Maximal EBV load (genomes/10 <sup>6</sup> cells)	Days post BMT
<b>High risk patients</b>			
JB <sup>a</sup>	TCD	1,250	31
UH	TCD	6,250	129, 149, 366
PL	TCD	31,250	53, 63
OL	TCD	31,250	49, 125
RG	TCD	156,250	42, 52
GL	TCD	31,250	80
HS <sup>a</sup>	U	156,250	80
mean±SE		59107±25963	
Median		31250	
<b>Low risk patients</b>			
MU	U	50	34
NJ	U	250	51, 62
SG	U	1250	62, 79, 93
RT	U	50	95
EE	U	1250	55
PZ	U	1250	335
LS	U	250	13, 27, 53, 62, 73, 81
GS	U	1250	67
mean±SE		700±269	
Median		750	



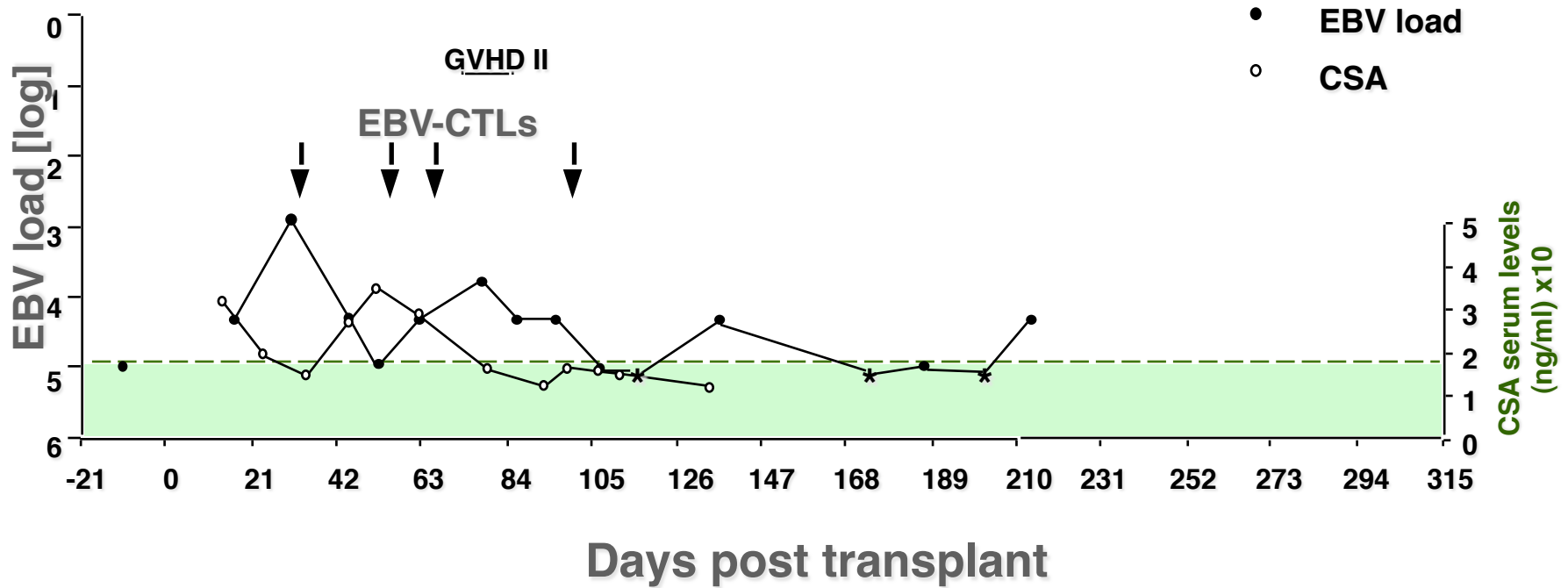
# EBV specific cytotoxic T-cell (CTL) responses



- polyclonal responses preferentially directed against EBNA3,4,6 and antigens of the lytic cycle
- strongly focused on certain MHC:peptide combinations
- endogenously expressed EBNA1 is not recognised

# Early administration of EBV-CTLs prevents the increase of EBV load

Patient 5



# Study of "EBV" at transplant unit of Karolinska University Hospital South (Huddinge)



Karolinska  
Institutet

## Question

Can we identify better tools for PTLD risk prediction at individual patients level?

T cell phenotyping on EBV-related immune reconstitution (tetramers, FCM)

## Cohort

Entered so far: 350 adults & 50 children entered (open)

Sampled 1,2,3,6, 12 and 24 months > transplantation

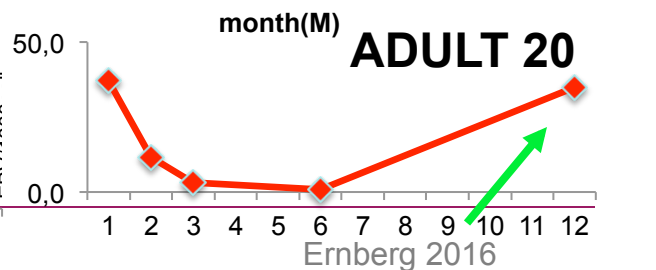
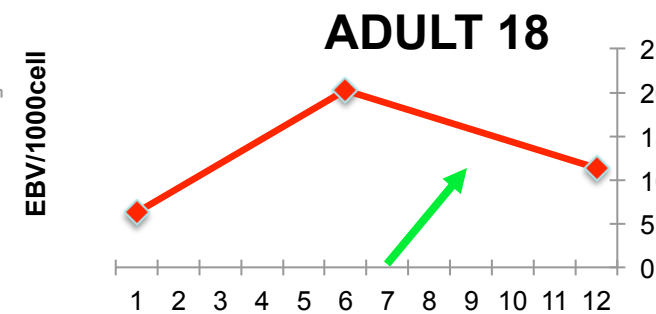
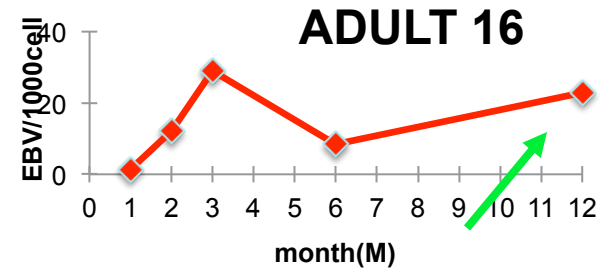
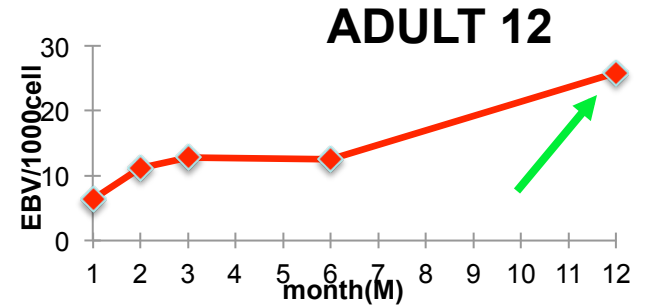
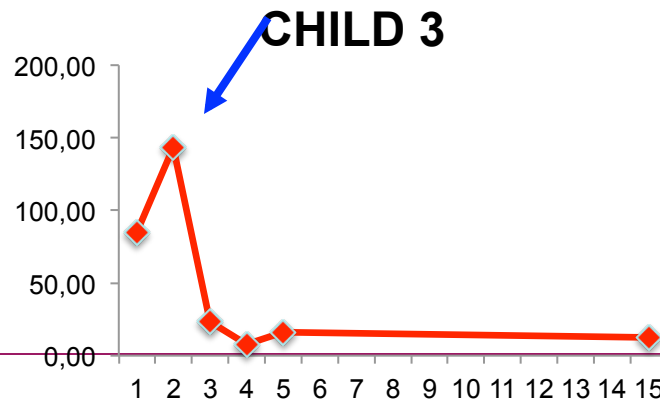
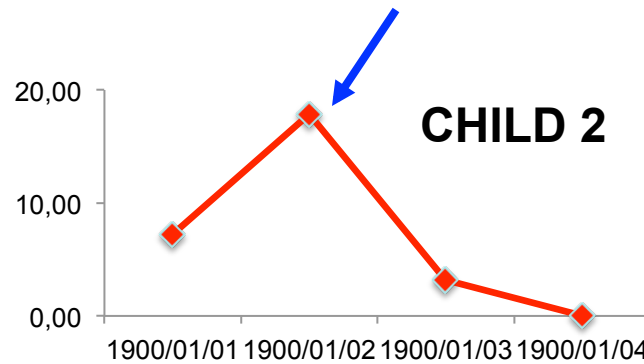
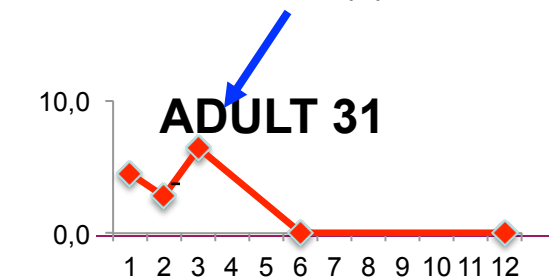
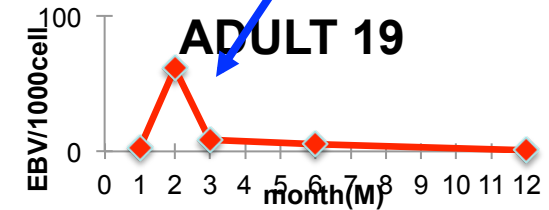
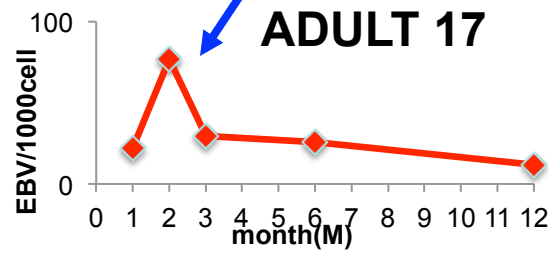
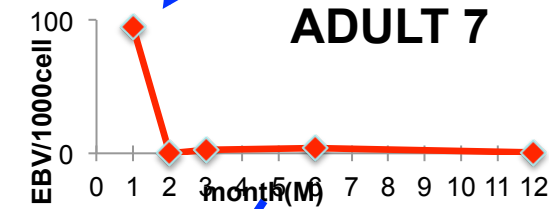
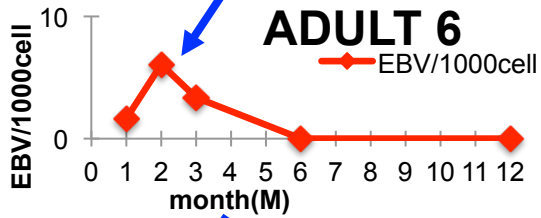
## Colaborators

Markus Maeurer, Olle Ringdén, Johan Matsson, Jacek Winiarski,



# EBV DNA load over time: TWO patterns

← Type I  
 Typell →

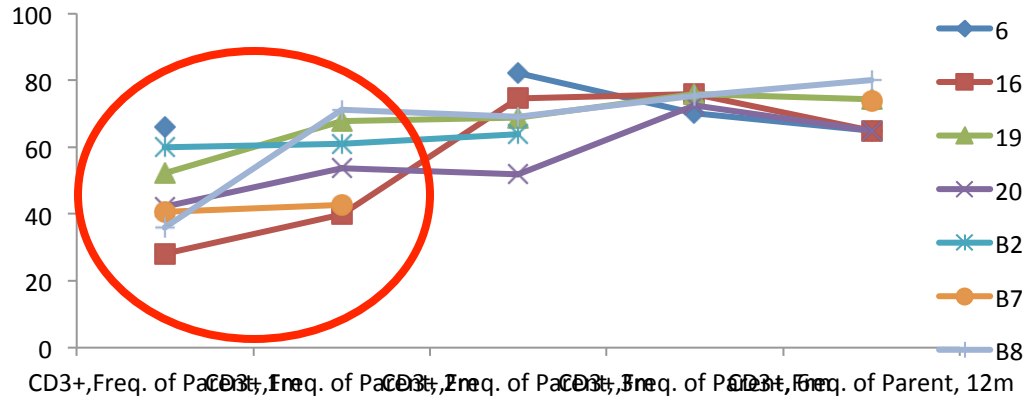


# Fraction CD3+ cells

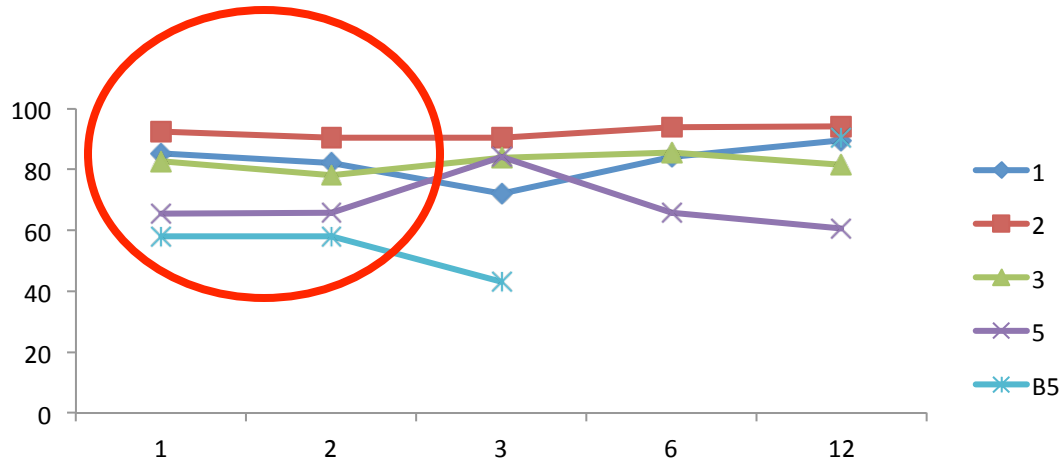


Karolinska Institutet

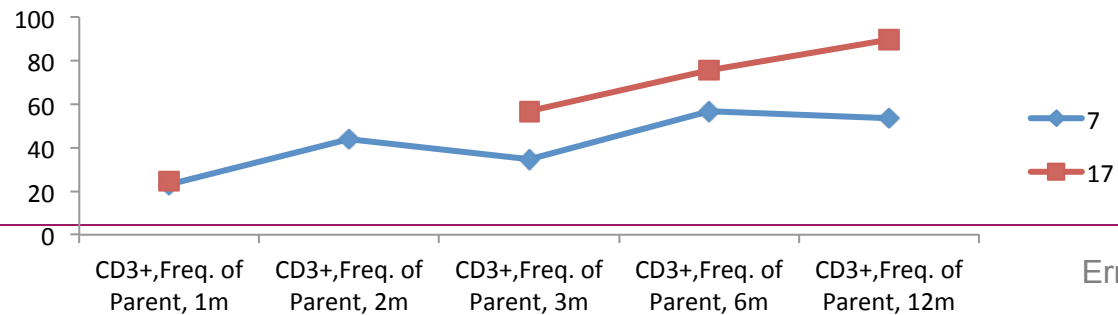
Intermediate



Low

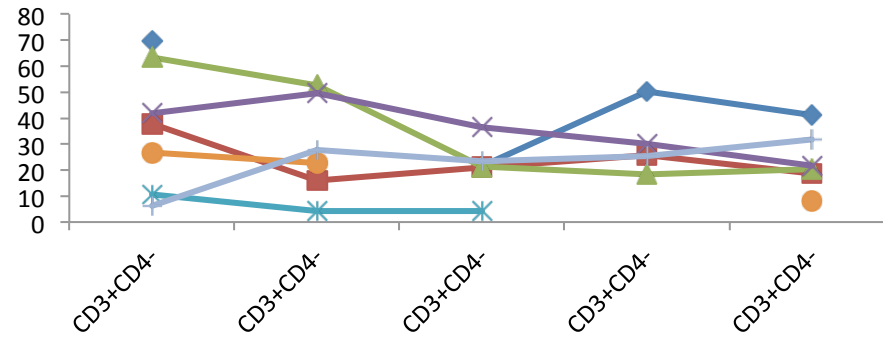


High

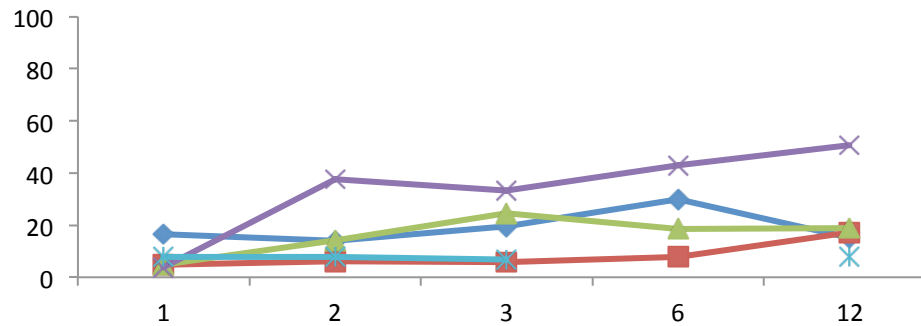


# CD4-CD8- T cells

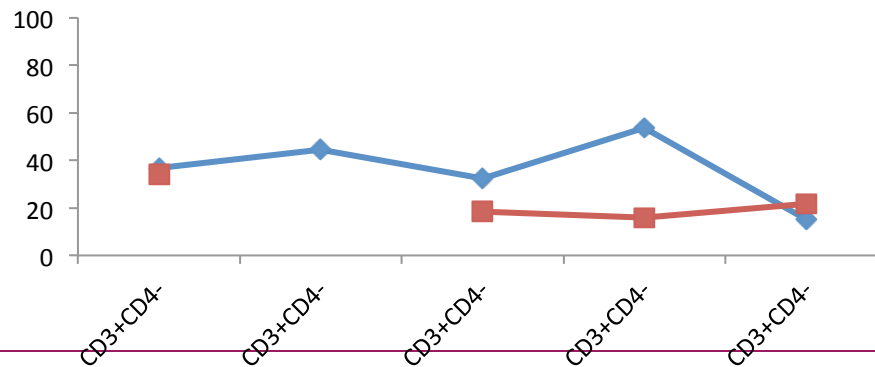
Intermediate

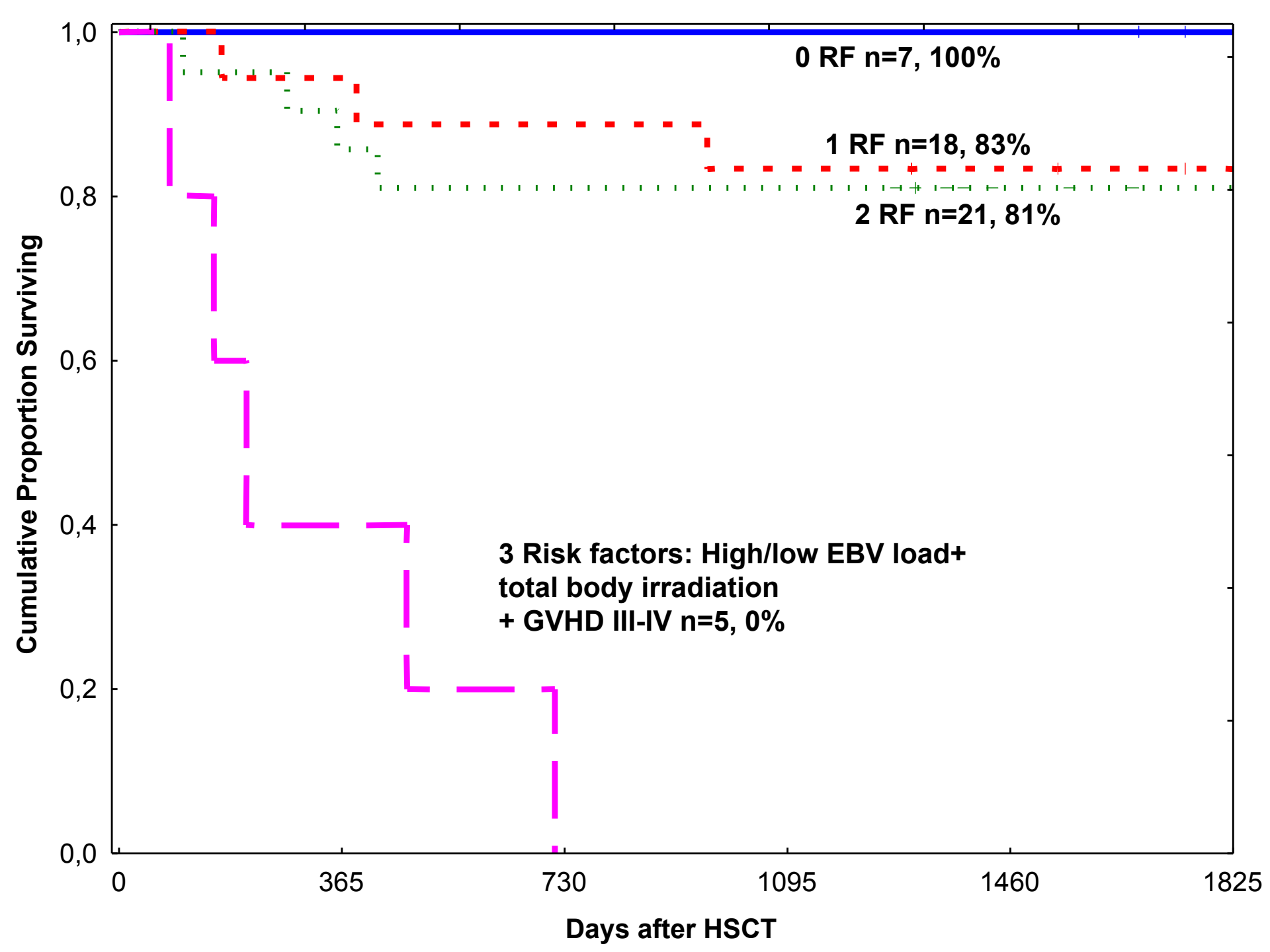


Low



High





## Concluding remarks

Target population for vaccination against EBV not identified; efficient vaccine exist (rec gp350); duration of protection not known

Normalization of EBV load in risk groups depends on functional immunereconstitution (cART; post-BMT)

Adoptive (EBV-specific) T-cell therapy prevents PTLD and cures some lymphomas (post HSCT)

New possibilities: check point inhibitors, CD4, interleukins (IL21?)

Extreme low or high EBV load in blood (B-cell bound) post-BMT/HSCT poor prognosis. With aGCVD & TBI predicts (100%) failure

---

# Collaborators



Huddinge Transplantation &  
Pediatric clinic

Jacek Winiarski  
Olle Ringdén

CTL work  
Maria Masucci, CMB  
Teresa Frisan, CMB  
Viktor Levitsky, CMB

EBV  
Jie-Zhi Zou, MTC

HIV  
Anna Friis  
Börje Åkerlund

T-cell phenotyping  
Nalini Vudattu, SMI & MTC  
Markus Maeurer, SMI & MTC

Members; now and recent

Andrey Alexeyenko  
Rozina Caridhe  
Sun Di  
Nguyen van Do  
Ziming Du  
Anna Friis  
Elvira Grigorieva  
Sven Grüzmier  
LiFu Hu  
Qin Li  
Liudmila Matskova  
Tore Midtvedt  
Imran Nawaz  
Elisabeth Norin  
Jian-Yong Shao  
Anders Wennborg  
Xiao Xue  
Jie-Zhi Zou  
Xiaoying Zou